



HARPER ENGINEERING CO.

200 S. Tobin St. Renton, Washington 98057

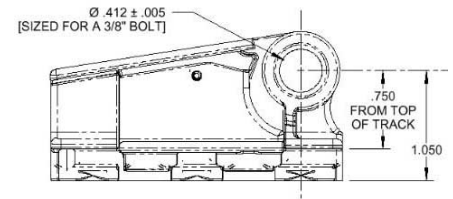
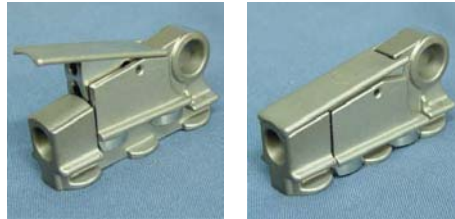
Harper Tool-Less Seat Fittings

- Quick install / release seat fittings
- Anti-rattle features

- Precision cast components
- Meet Boeing requirements

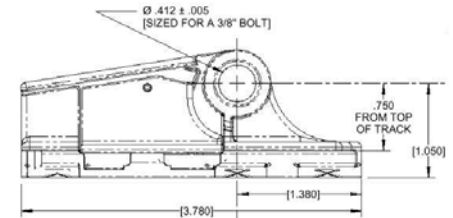
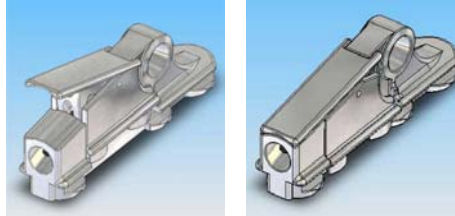
H3-1910-1 Aft Fitting (3-hole)

- Clevis Seat Leg Connection
- Positive Latch Indicator
- Boeing SCD S441W001-150



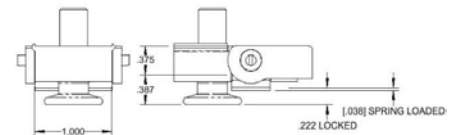
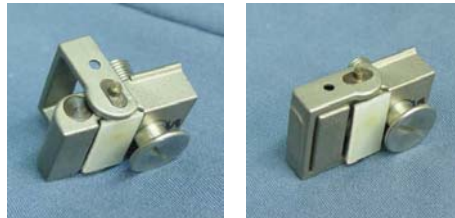
H3-1910-2 Aft Fitting (3-hole, elongated)

- Clevis Seat Leg Connection
- Positive Latch Indicator
- Boeing SCD S441W001-151



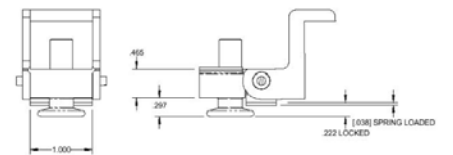
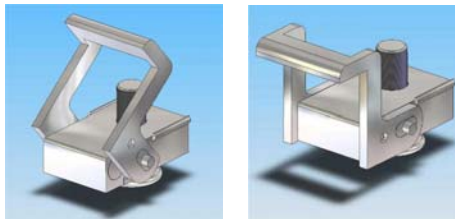
H3-1910-3 Forward Fitting (Configuration "A")

- Bolt Seat Leg Connection
- Direct Actuator
- Boeing SCD S441W001-110



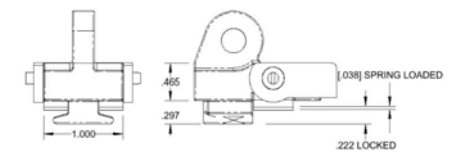
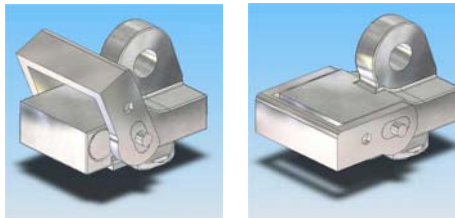
H3-1910-4 Forward Fitting (Configuration "B")

- Bolt Seat Leg Connection
- Offset Actuator
- Boeing SCD S441W001-111



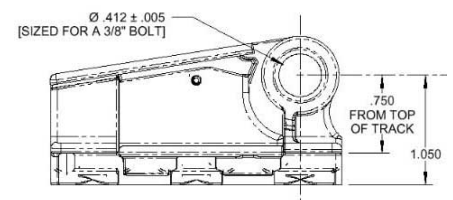
H3-1910-5 Forward Fitting (Configuration "C")

- Clevis Seat Leg Connection
- Direct Actuator
- Boeing SCD S441W001-120



H3-1910-6 Aft Fitting (3-hole, reduced shear)

- Clevis Seat Leg Connection
- For use in splice areas
- Positive Latch Indicator
- Boeing SCD S441W001-160



H3-1910-7 Aft Fitting (3-hole, elongated, reduced shear)

- Clevis Seat Leg Connection
- For use in splice areas
- Positive Latch Indicator
- Boeing SCD S441W001-161

