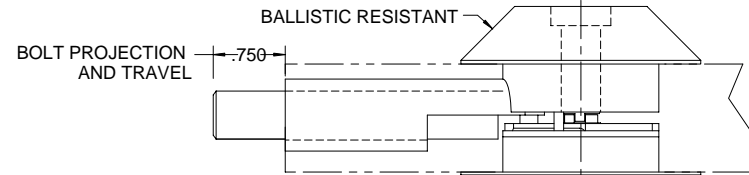
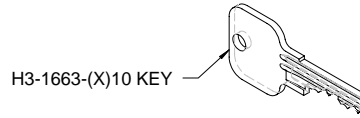


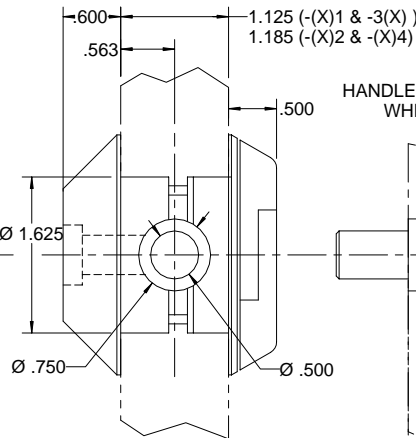
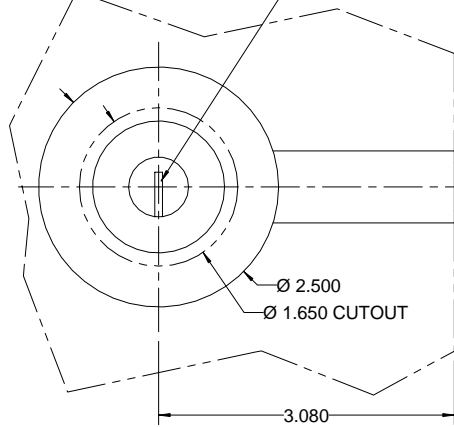
**INNOVATIVE CUSTOM DESIGNED HARDWARE IS OUR SPECIALTY**

REV. 7/07

STATUS	KEY	LOCK HANDLE	LOCKOUT HANDLE	BOLT	INDICATOR
UNLOCKED	ROTATE 90° CW TO LOCK	UNLOCKED (VERTICAL)	UNLOCKED (VERTICAL)	RETRACTED	RED
LOCKED	ROTATE 90° CCW TO UNLOCK	LOCKED (HORIZONTAL)	UNLOCKED (VERTICAL)	EXTENDED	RED
LOCKOUT	NON-FUNCTIONAL ROTATION	LOCKED (HORIZONTAL)	LOCKED (HORIZONTAL)	EXTENDED	GREEN



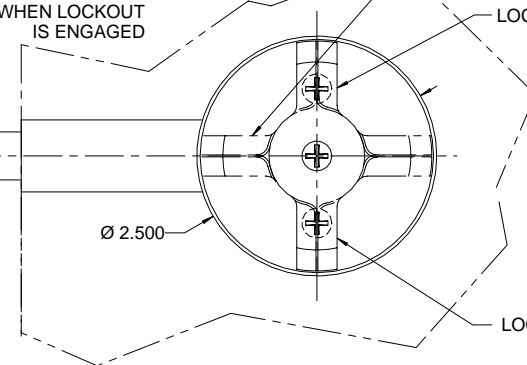
LOCK KEYED TO FIT BOEING 10-60370-1 KEY.  
UNIQUE KEYING AVAILABLE.  
KEY IS INOPERABLE IN LOCKOUT POSITION



HANDLES LIFT .10-.12 WHEN LOCKOUT IS ENGAGED

HANDLES ROTATE 90° CCW TO LOCK OR LOCKOUT

LOCKOUT HANDLE



- (X)1 DEAD BOLT ASSY (SHOWN)
- (X)2 DEAD BOLT ASSY (OPPOSITE -(X)1, EXCEPT AS NOTED)
- (X)3 DEAD BOLT ASSY (SHOWN)
- (X)4 DEAD BOLT ASSY (OPPOSITE -(X)3, EXCEPT AS NOTED)

**MATERIAL:**

LOCK BODY: CRES  
 LOCK ESCUTCHEON: CRES  
 HANDLE ESCUTCHEON: ALUM  
 HANDLE: ALUM  
 BOLT GUIDE: ALUM  
 BOLT: CRES

**FINISH:**

LOCK BODY: ELECTRO-POLISH, PASSIVATE  
 LOCK ESCUTCHEON: BRUSH SATIN FINISH, PASSIVATE  
 HANDLE ESCUTCHEON: BEAD BLAST, CLEAR COAT  
 HANDLE: BEAD BLAST, HARD ANODIZE  
 BOLT GUIDE: ANODIZE  
 BOLT: EMRALON COAT

**PATENTED**

ALL INFORMATION ON THIS DRAWING IS PROPRIETARY TO HARPER ENGINEERING COMPANY.

All design, manufacturing, reproduction, use and sale rights regarding the same are expressly reserved except that this drawing may be reproduced by the government of the United States of America only for distribution to government activities and/or personnel for purposes of maintenance, supply identification, stock listing and other related uses. All patent rights hereto are expressly reserved by

*Harper Engineering Co.*

**UNLESS OTHERWISE SPECIFIED**

ALL DIM ARE REFERENCE

DIMENSIONS ARE IN INCHES ± .010  
 ANGULAR DIMENSIONS ARE IN DEGREES ± 1°  
 BREAK ALL CORNERS  
 INTERNAL & EXTERNAL RADII .030 MAX  
 MAXIMUM DRAFT 2°

Code Ident No.

34941

*Harper Engineering Co.*

200 S. Tobin St. Renton, Washington 98055

TITLE

H3-1813 FLIGHTDECK DOOR  
 DEAD BOLT