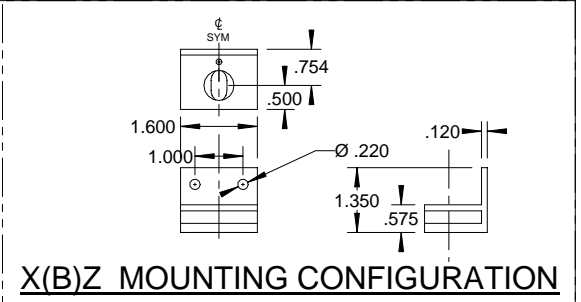
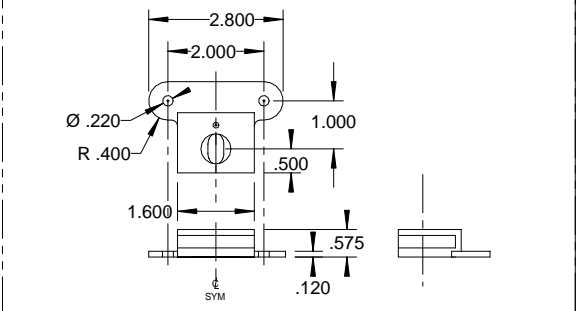


NOTE: SEE APPLICABLE SUB ASSY FOR - MOUNTING CONFIGURATION (RIGHT), BAYONET CONFIGURATION (LEFT)

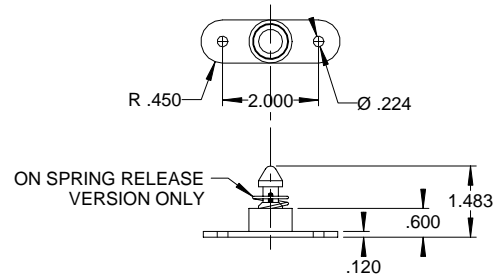
-(XYZ) BAYONET LATCH ASSY



X(B)Z MOUNTING CONFIGURATION



X(A)Z MOUNTING CONFIGURATION



-XY(A) MOUNTING CONFIGURATION

Part Number: (XYZ) "()" INDICATES ACTIVE CHARACTERS
 EXAMPLE: H3-1689-1AA
 HARPER ENG.CO. DWG DESIGNATION
 DWG. NUMBER
 BAYONET MOUNTING CONFIGURATION
 LATCH MOUNTING CONFIGURATION
 -1 = NO SPRING RELEASE, NO FLOAT
 -2 = NO SPRING RELEASE, WITH .03 RADIAL FLOAT
 -3 = WITH SPRING RELEASE, NO FLOAT
 -4 = WITH SPRING RELEASE, WITH .03 RADIAL FLOAT

MATERIAL:
 MOUNTS: 2024-T4 OR T351 ALUM
 BAYONET: 303 CRES
 RELEASE: NYLON
 SPRING: 17-7 PH CRES

FINISH:
 MOUNTS: ANODIZE
 BAYONET: PASSIVATE
 RELEASE: N/A
 SPRING: PASSIVATE

ALL INFORMATION ON THIS DRAWING IS PROPRIETARY TO HARPER ENGINEERING COMPANY.
 All design, manufacturing, reproduction, use and sale rights regarding the same are expressly reserved except that this drawing may be reproduced by the government of the United States of America only for distribution to government activities and/or personnel for purposes of maintenance, supply identification, stock listing and other related uses. All patent rights hereto are expressly reserved by
Harper Engineering Co.

UNLESS OTHERWISE SPECIFIED
 ALL DIM ARE REFERENCE
 DIMENSIONS ARE IN INCHES ± .010
 ANGULAR DIMENSIONS ARE IN DEGREES ± 1°
 BREAK ALL CORNERS
 INTERNAL & EXTERNAL RADII .030 MAX
 MAXIMUM DRAFT 2°

Code Ident No. 34941

Harper Engineering Co.

200 S. Tobin St. Renton, Washington 98055

TITLE H3-1689 BAYONET LATCH ASSY - PANEL