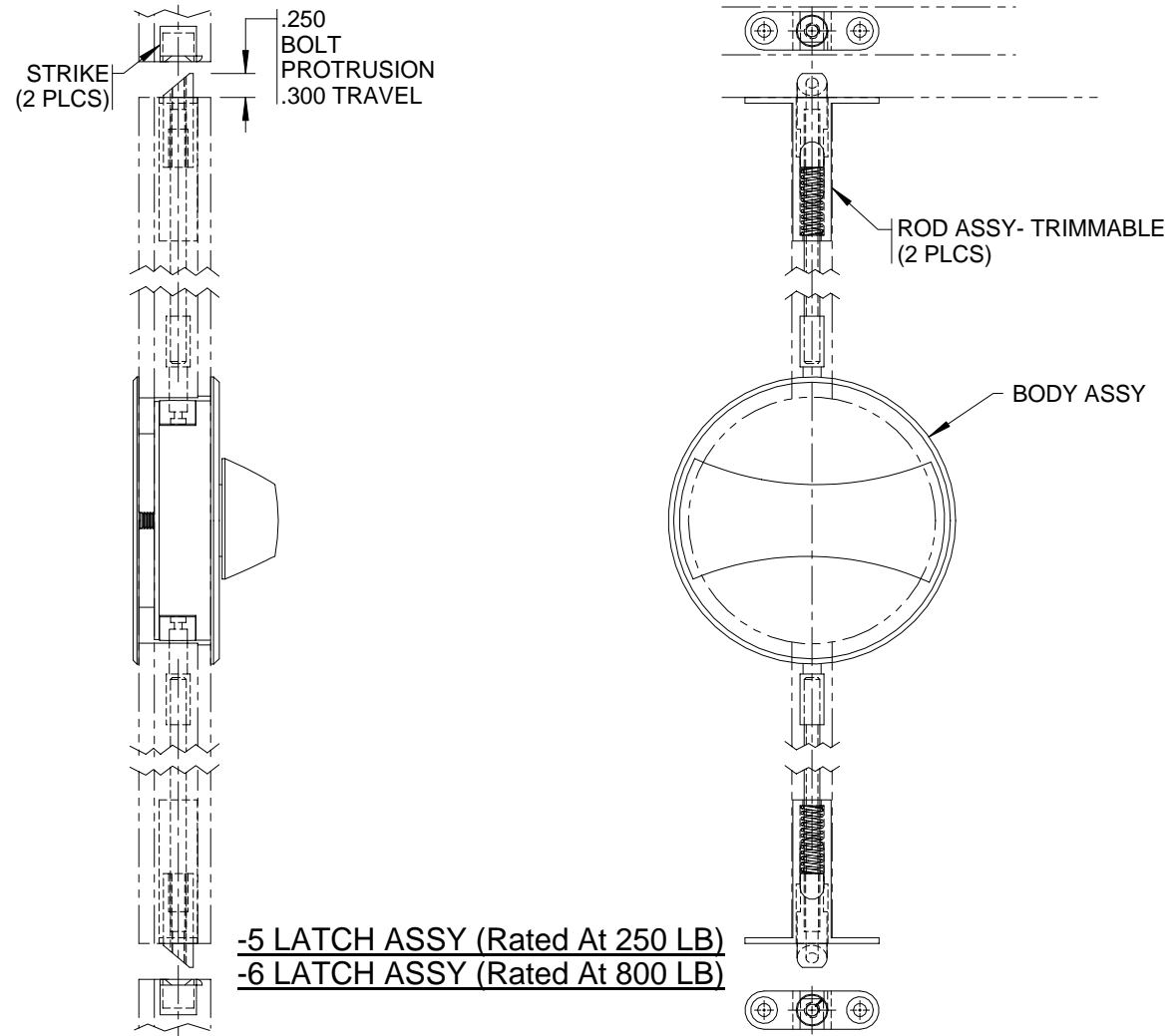


**INNOVATIVE CUSTOM DESIGNED HARDWARE IS OUR SPECIALTY**

REV. 7/07



**-5 LATCH ASSY (Rated At 250 LB)**  
**-6 LATCH ASSY (Rated At 800 LB)**

MATERIAL:  
 LATCH: 6061-T6 ALUM  
 SLIDE: ACETAL  
 -5 BOLT: ACETAL  
 -6 BOLT: CRES  
 PULL RODS: 18-8 PH CRES

FINISH:  
 LATCH: CLEAR POLYURETHANE  
 PULL RODS: PASSIVATE

ALL INFORMATION ON THIS DRAWING IS PROPRIETARY TO HARPER ENGINEERING COMPANY.

All design, manufacturing, reproduction, use and sale rights regarding the same are expressly reserved except that this drawing may be reproduced by the government of the United States of America only for distribution to government activities and/or personnel for purposes of maintenance, supply identification, stock listing and other related uses. All patent rights hereto are expressly reserved by

*Harper Engineering Co.*

**UNLESS OTHERWISE SPECIFIED**

ALL DIM ARE REFERENCE

DIMENSIONS ARE IN INCHES ± .010  
 ANGULAR DIMENSIONS ARE IN DEGREES ± 1°  
 BREAK ALL CORNERS  
 INTERNAL & EXTERNAL RADII .030 MAX  
 MAXIMUM DRAFT 2°

Code Ident No.

34941

*Harper Engineering Co.*

200 S. Tobin St. Renton, Washington 98055

TITLE

H3-1677  
 TWO POINT LATCH ASSY -