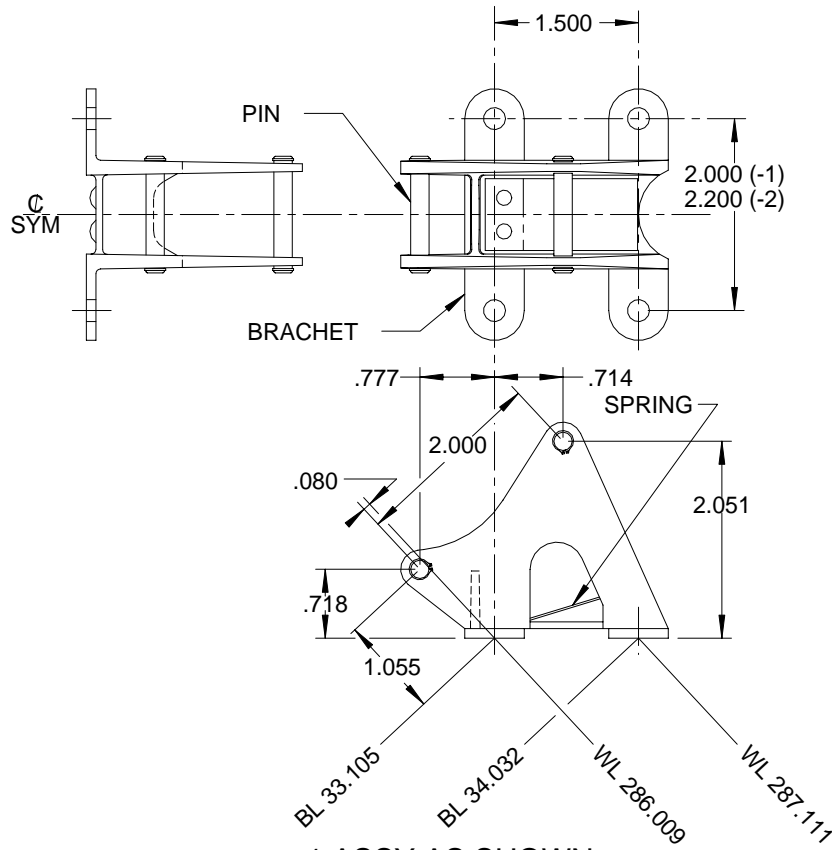


**INNOVATIVE CUSTOM DESIGNED HARDWARE IS OUR SPECIALTY**

REV. 7/07




**-1 ASSY AS SHOWN**  
**-2 ASSY AS NOTED**  
 MATES WITH H3-1560

**MATERIAL:**  
 BRACKET: A380 ALUM  
 PIN: 303 CRES  
 SPRING: 301 F/H CRES

**FINISH:**  
 BRACKET: ANODIZE, BMS 10-11 PRIMER,  
 BMS 10 - 11 GRAY ENAMEL GLOSS  
 (COLOR - BAC 707)  
 PIN: DRY LUBE (EMRALON)  
 SPRING: DRY LUBE (EMRALON)

**GENERAL:** -SEE (H3-1560 HINGE ASSY  
 INB'D CIELING PANEL (777))  
 ON CATALOG PG. L4  
 FOR MATING ASSY.

**WEIGHT:** .2 LBS MAX

ALL INFORMATION ON THIS DRAWING IS PROPRIETARY TO HARPER ENGINEERING COMPANY.  All design, manufacturing, reproduction, use and sale rights regarding the same are expressly reserved except that this drawing may be reproduced by: the government of the United States of America only for distribution to government activities and/or personnel for purposes of maintenance, supply identification, stock listing and other related uses. All patent rights hereto are expressly reserved by  <i>Harper Engineering Co.</i>	<b>UNLESS OTHERWISE SPECIFIED</b>  ALL DIM ARE REFERENCE  DIMENSIONS ARE IN INCHES ± .010 ANGULAR DIMENSIONS ARE IN DEGREES ± 1° BREAK ALL CORNERS INTERNAL & EXTERNAL RADII .030 MAX MAXIMUM DRAFT 2°	  200 S. Tobin St. Renton, Washington 98055
	Code Ident No. 34941	