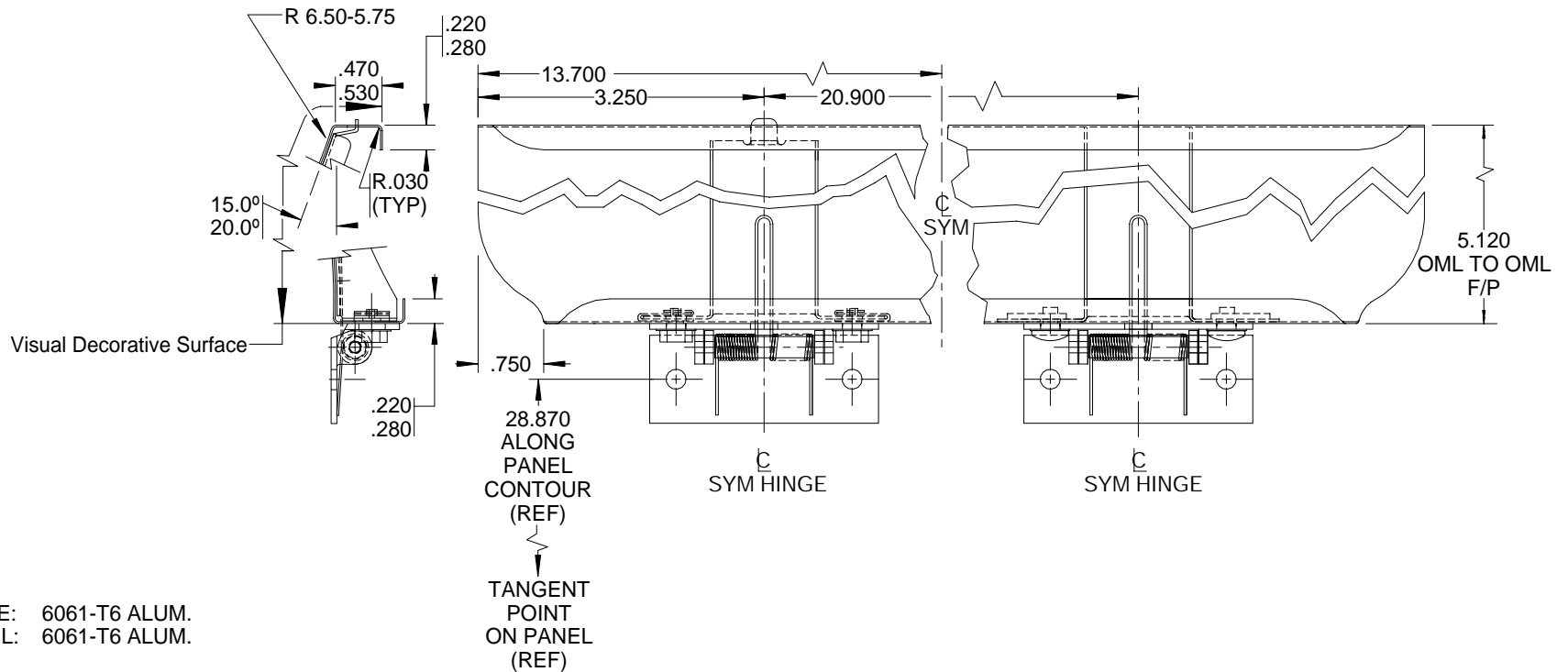


INNOVATIVE CUSTOM DESIGNED HARDWARE IS OUR SPECIALTY

REV. 7/07



-1(X) ASSY

MATERIAL:
 HINGE: 6061-T6 ALUM.
 PANEL: 6061-T6 ALUM.

FINISH:
 HINGE: ANODIZE; 10-11 PRIMER
 PANEL: ANODIZE; 10-11 PRIMER;
 -VISUAL DECORATIVE SURFACE:
 BMS 10-83 PRIMER, BMS 10-83 ENAMEL
 TEXTURE "C"; A COLOR SUFFIX LETTER
 CORRESPONDING TO DWG 411U5999
 SHALL FOLLOW DASH NO.

GENERAL:
 -HINGE ASSY SHALL HAVE AN INITIAL FORCE
 OF 5.30 IN-LBS MIN IN THE INSTALLED
 POSITION SHOWN IN -1 ASSY VIEW.
 -HINGE ASSY SHALL HAVE A MAX FORCE
 OF 11.0 IN-LBS WHEN HINGE LEAVES
 ARE AT RIGHT ANGLES TO EACH OTHER.

WEIGHT: .6 LBS MAX

ALL INFORMATION ON THIS DRAWING
 IS PROPRIETARY TO
 HARPER ENGINEERING COMPANY.

All design, manufacturing, reproduction,
 use and sale rights regarding the same
 are expressly reserved except that
 this drawing may be reproduced by:
 the government of the United States
 of America only for distribution to
 government activities and/or personnel
 for purposes of maintenance, supply
 identification, stock listing and other
 related uses. All patent rights hereto
 are expressly reserved by

Harper Engineering Co.

UNLESS OTHERWISE SPECIFIED

ALL DIM ARE REFERENCE

DIMENSIONS ARE IN INCHES ± .010
 ANGULAR DIMENSIONS ARE IN DEGREES ± 1°
 BREAK ALL CORNERS
 INTERNAL & EXTERNAL RADII .030 MAX
 MAXIMUM DRAFT 2°

Code Ident No.

34941

Harper Engineering Co.

200 S. Tobin St. Renton, Washington 98055

TITLE

**H3-1490
 PANEL PRESSURE RELIEF**