

INNOVATIVE CUSTOM DESIGNED HARDWARE IS OUR SPECIALTY

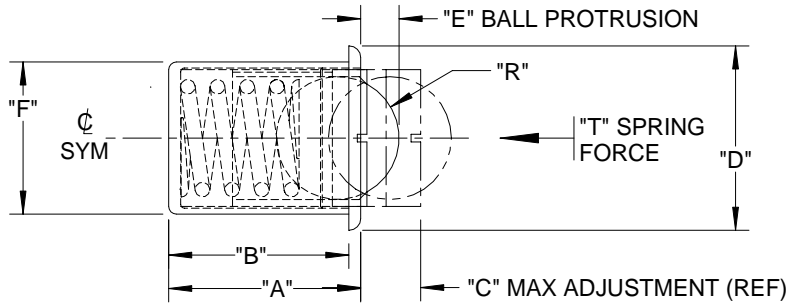
REV. 7/07

-3	BACC12C9	.500	.469	.156	Ø.480	.100	Ø.396	Ø.3125	3-6 LBS
-1	BACC12C3	.406	.381	.078	Ø.312	.040	Ø.250	Ø.1875	2-5 LBS
PART NO.	BOEING STD. NO.	A	B	C	D	E	F	R	T

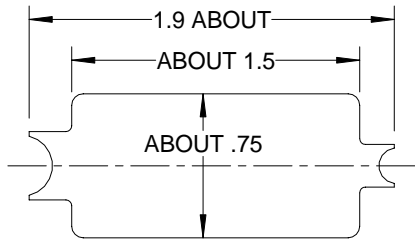
TABLE 1

-20	—	.125	.125	.578	.512	.047	.328	.172	Ø.110	Ø.187
-4	BACC12C10	.266	.469	.812	1.109	.062	.562	.281	Ø.140	Ø.209
-2	BACC12C4	.125	.328	.578	.812	.047	.328	.172	Ø.110	Ø.187
PART NO.	BOEING STD. NO.	G	H	J	K	L	M	N	P	S

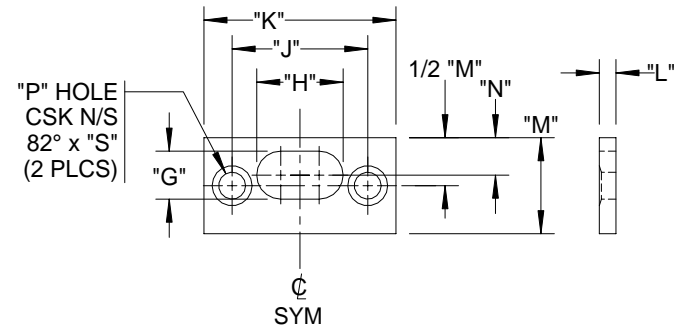
TABLE 2



-1 CATCH
-3 CATCH
 NOT TO SCALE
 SEE TABLE 1 FOR DIM.



-33 ADJUSTING WRENCH



-2 STRIKE
-4 STRIKE
-20 STRIKE
 NOT TO SCALE
 SEE TABLE 2 FOR DIM.

MATERIAL:
 -1 & -3 CATCH: CASE - BRASS
 BALL - CRES
 SPRING - MUSIC WIRE
 -2, -4 & -20 STRIKE:- BRASS

FINISH:
 -1 & -3 CATCH: CASE - CHROME PLATE
 BALL - N/A
 SPRING - N/A
 -2, -4 & -20 STRIKE:- BRASS

GENERAL:
 QTY OF 1 (-33) INCLUDED WITH EACH 100
 PIECE INTERMEDIATE PACKAGE OF CATCHES.

ALL INFORMATION ON THIS DRAWING IS PROPRIETARY TO HARPER ENGINEERING COMPANY.

All design, manufacturing, reproduction, use and sale rights regarding the same are expressly reserved except that this drawing may be reproduced by: the government of the United States of America only for distribution to government activities and/or personnel for purposes of maintenance, supply identification, stock listing and other related uses. All patent rights hereto are expressly reserved by

Harper Engineering Co.

UNLESS OTHERWISE SPECIFIED

ALL DIM ARE REFERENCE
 DIMENSIONS ARE IN INCHES ± .010
 ANGULAR DIMENSIONS ARE IN DEGREES ± 1°
 BREAK ALL CORNERS
 INTERNAL & EXTERNAL RADI! .030 MAX
 MAXIMUM DRAFT 2°

Code Ident No. 34941

Harper Engineering Co.



200 S. Tobin St. Renton, Washington 98055

TITLE H3-1242
 BALL CATCH ASSY