

HARPER ASSY P/N	B DIM	A DIM	HARPER ASSY P/N	B DIM	A DIM
-1-2360E	23.600	CENTER	-2-2260E	22.600	6.300
-1-2760E	27.600	CENTER	-2-2360E	23.600	6.300
-1-3760E	37.600	CENTER	-2-2460E	24.600	6.300
-1-4760E	47.600	CENTER	-2-3660E	36.600	6.300
-1-5760E	57.600	CENTER	-3-1160E	11.600	6.300
A-1-5760E	57.600	CENTER	-3-1260E	12.600	6.300
-2-1160E	11.600	6.300	-3-1310E	13.100	6.300
-2-1260E	12.600	6.300	-3-1360E	13.600	6.300
-2-1310E	13.100	6.300	-3-1460E	14.600	6.300
-2-1360E	13.600	6.300	-3-1560E	15.600	6.300
-2-1460E	14.600	6.300	-3-1660E	16.600	6.300
-2-1560E	15.600	6.300	-3-1760E	17.600	6.300
-2-1610E	16.100	6.300	-3-1860E	18.600	6.300
-2-1660E	16.600	6.300	-3-1960E	19.600	6.300
-2-1760E	17.600	6.300	-3-2060E	20.600	6.300
-2-1860E	18.600	6.300	-3-2160E	21.600	6.300
-2-1960E	19.600	6.300	-3-2260E	22.600	6.300
-2-2060E	20.600	6.300	-3-2360E	23.600	6.300
-2-2160E	21.600	6.300	-3-2460E	24.600	6.300

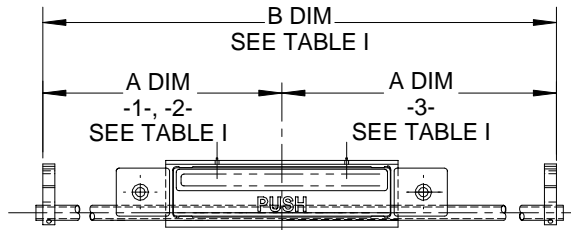
HARPER ASSY P/N	B DIM	A DIM	HARPER ASSY P/N	B DIM	A DIM
-1L2760E	27.600	CENTER	-2L2160E	21.600	6.950
-1L3760E	37.600	CENTER	-2L2260E	22.600	6.950
-1L4760E	47.600	CENTER	-2L2360E	23.600	6.950
-1L5760E	57.600	CENTER	-3L1360E	13.600	5.650
-2L1360E	13.600	6.950	-3L1460E	14.600	5.650
-2L1560E	15.600	6.950	-3L1660E	16.600	5.650
-2L1760E	17.600	6.950	-3L2060E	20.600	5.650
-2L1860E	18.600	6.950	-3L2360E	23.600	5.650
-2L2060E	20.600	6.950	-4L2760E	27.600	14.900

MATERIAL:
 LUG & PAWL: 6061-T6 ALUM
 HANDLE: A380 ALUM CASTING
 CRANK & LATCH HOUSING: MOLDED NYLON
 TUBE: ALUM TUBE

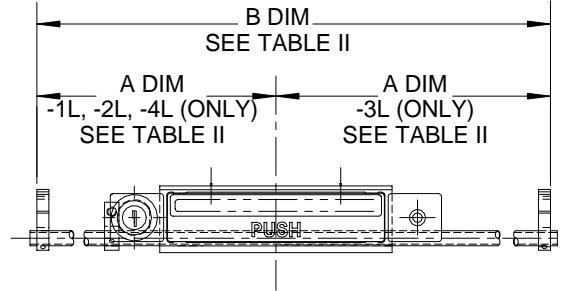
FINISH:
 LUG & PAWL: ALODINE
 HANDLE: ALODINE
 CRANK & LATCH HOUSING: N/A
 TUBE: N/A

GENERAL: SEE LATCH ASSY PART NUMBER EXAMPLE ABOVE.

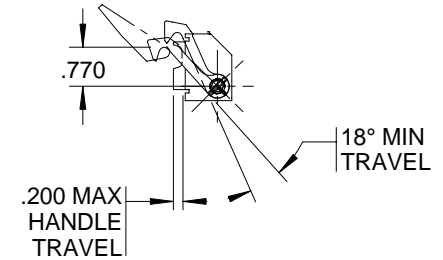
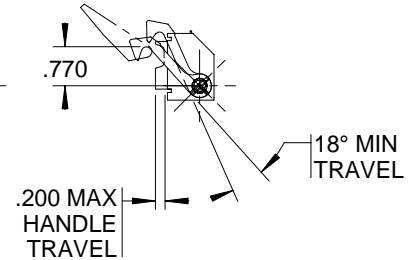
WEIGHT: XX LBS



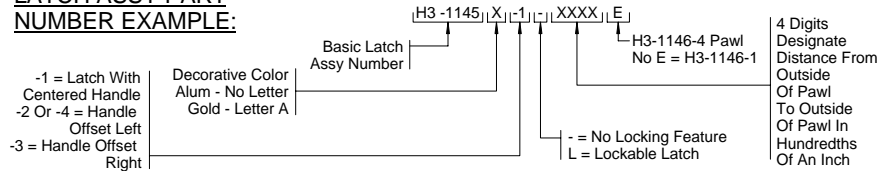
**-1, -2, -3 (-XXXX)E
LATCH ASSY**



**-1L, -2L, -3L, -4L (XXXX)E
LOCKING LATCH ASSY**



LATCH ASSY PART NUMBER EXAMPLE:



EXAMPLES:
 H3-1145-1-5600 = Non-Locking Latch With Handle Centered; 56.00 Inches To Outer Sides Of Pawls.
 H3-1145-1L3475 = Lockable Latch With Handle Centered; 34.75 Inches To Outer Sides Of Pawls.

ALL INFORMATION ON THIS DRAWING IS PROPRIETARY TO HARPER ENGINEERING COMPANY.

All design, manufacturing, reproduction, use and sale rights regarding the same are expressly reserved except that this drawing may be reproduced by the government of the United States of America only for distribution to government activities and/or personnel for purposes of maintenance, supply identification, stock listing and other related uses. All patent rights hereto are expressly reserved by

Harper Engineering Co.

UNLESS OTHERWISE SPECIFIED

ALL DIM ARE REFERENCE
 DIMENSIONS ARE IN INCHES ± .010
 ANGULAR DIMENSIONS ARE IN DEGREES ± 1°
 BREAK ALL CORNERS
 INTERNAL & EXTERNAL RADII .030 MAX
 MAXIMUM DRAFT 2°

Code Ident No. 34941

Harper Engineering Co.



200 S. Tobin St. Renton, Washington 98055

TITLE
 H3-1145 LATCH ASSEMBLY
 STOWAGE COMPARTMENT